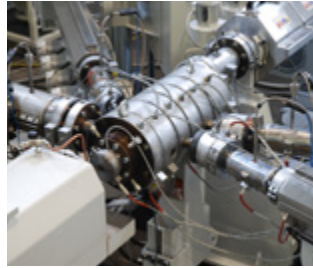


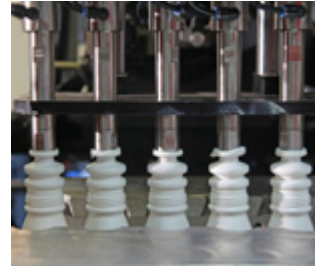
## APPLICATIONS



INJECTION



EXTRUSION



BLOW



METAL



ELECTRICAL FURNACES



MOBILE HYDRAULICS



LIFTS



WATER & HVAC

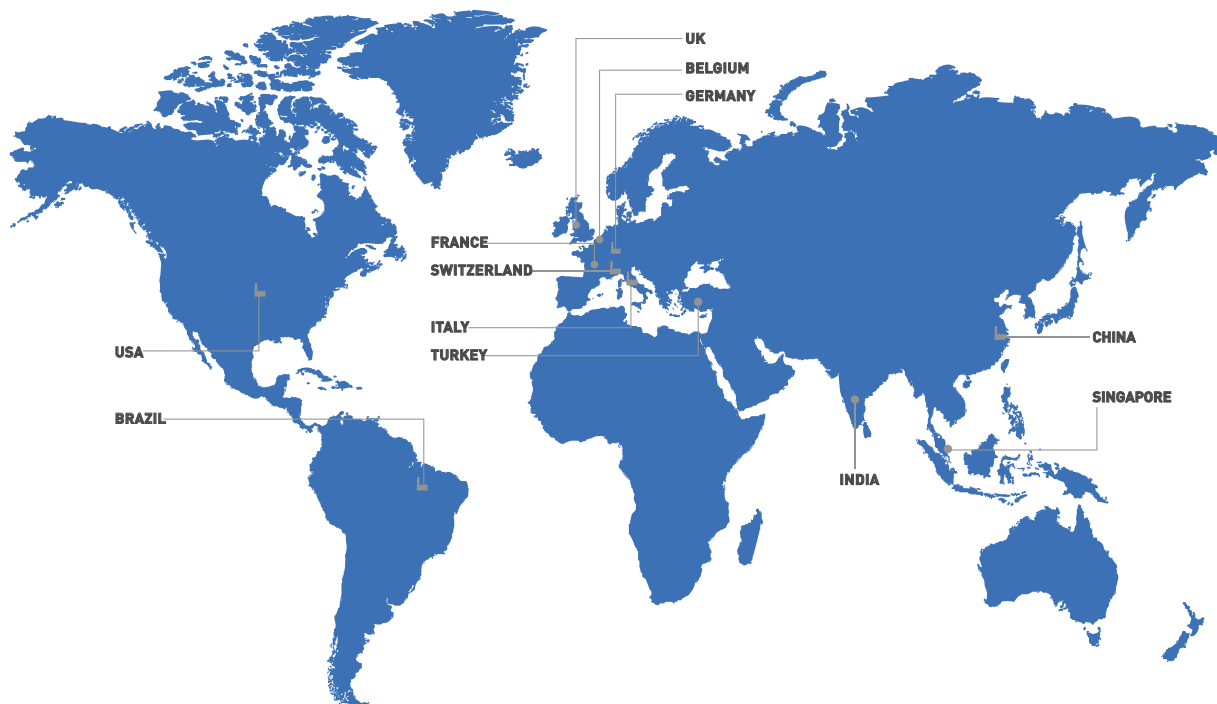


CRANES & OVERHEAD CRANES

In addition to foreseeing the market's application needs, Gefran forms partnerships with its customers to find **the best way to optimise and boost the performance of various applications.**

Gefran products communicate with one another to provide integrated solutions and can interact with devices from other companies, thanks to their compatibility with numerous field buses.





#### GEFRAN DEUTSCHLAND GmbH

Philipp-Reis-Straße 9a  
D-63500  
Seligenstadt  
Ph. +49 (0) 61828090  
Fax +49 (0) 6182809222  
vertrieb@gefran.de

#### GEFRAN BENELUX NV

ENA 23 Zone 3, nr. 3910  
Lammerdries-Zuid 14A  
B-2250 OLEN  
Ph. +32 (0) 14248181  
Fax +32 (0) 14248180  
info@gefran.be

#### GEFRAN SIEI - ASIA

31 Ubi Road 1  
#02-07,  
Aztech Building,  
Singapore 408694  
Ph. +65 6 8418300  
Fax +65 6 7428300  
info@gefran.com.sg

#### GEFRAN HEADQUARTER

Via Sebina, 74  
25050 PROVAGLIO D'ISEO (BS) ITALY  
Ph. +39 03098881  
Fax +39 0309839063

#### SIEI AREG - GERMANY

Gottlieb-Daimler Strasse 17/3  
D-74385  
Pleidelsheim  
Ph. +49 (0) 7144 897360  
Fax +49 (0) 7144 8973697  
info@sieiareg.de

#### GEFRAN UK Ltd

Clarendon Court  
Winwick Quay  
Warrington  
WA2 8QP  
Ph. +44 (0) 8452 604555  
Fax +44 (0) 8452 604556  
sales@gefran.co.uk

#### GEFRAN INDIA

Survey No. 191/A/1,  
Chinchwad Station Road, Chinchwad,  
Pune-411033, Maharashtra  
Ph. +91 20 6614 6500  
Fax +91 20 6614 6501  
gefran.india@gefran.in

#### GEFRAN DRIVES AND MOTION S.R.L.

Via Carducci, 24  
21040 GERENZANO (VA) ITALY  
Ph. +39 02967601  
Fax +39 029682653  
info.motion@gefran.com  
Technical Assistance:  
technohelp@gefran.com  
Customer Service  
salesmotion@gefran.com

#### SENSORMATE AG

Steigweg 8,  
CH-8355 Aadorf, Switzerland  
Ph. +41(0)52-2421818  
Fax +41(0)52-3661884  
http://www.sensormate.ch

#### GEFRAN MIDDLE EAST

Yeşilköy Mah. Atatürk Cad.  
EGS Business Park  
No:12 B1 Blok K:12 D:393  
Bakırköy/İstanbul/TÜRKİYE  
Ph. +90 212 465 91 21  
Fax +90 212 465 91 22  
info@gefran.com.tr

#### GEFRAN Inc.

400 Willow Street  
North Andover, MA  
01845 USA  
Toll Free 1-888-888-4474  
Fax +1 (617) 340 2761  
info.us@gefran.com

#### GEFRAN FRANCE SA

PARC TECHNO LAND  
Bâtiment K - ZI Champ Dolin  
3 Allée des Abruzzes  
69800 Saint-Priest  
Ph. +33 (0) 478770300  
Fax +33 (0) 478770320  
commercial@gefran.fr

#### GEFRAN SIEI

#### Drives Technology Co., Ltd

No. 1285, Beihe Road, Jiading  
District, Shanghai,  
China 201807  
Ph. +86 21 69169898  
Fax +86 21 69169333  
info@gefran.com.cn

#### GEFRAN BRASIL ELETROELETRÔNICA

Avenida Dr. Altino Arantes,  
377 Vila Clementino  
04042-032 SÃO PAULO - SP  
Ph. +55 (0) 1155851133  
Fax +55 (0) 1132974012  
comercial@gefran.com.br



[www.gefran.com](http://www.gefran.com)

# GEFRAN

# PRODUCT RANGE



# GEFRAN



Thanks to forty years of experience, Gefran is the world leader in the design and production of solutions for **measuring, controlling, and driving industrial production processes**. We have branches in 14 countries and a network of over 80 worldwide distributors.

## QUALITY AND TECHNOLOGY

Gefran components are a **concentration of technology**, the result of constant research and of **cooperation with major research centres**.

For this reason, Gefran is synonymous with **quality and expertise in the design and production of**:

**sensors** for measuring main variables such as **temperature, pressure, position and force**

**state-of-the-art components and solutions for indication and control**, satisfying demands for optimisation of

processes and intelligent management of energy consumption

**automation platforms** of various complexities

**electric drives** to control AC, DC, and brushless motors used in modern plants for industrial automation and civil lift engineering

**Gefran's know-how and experience guarantee continuity and tangible solutions.**



## SERVICES

A team of Gefran experts works with the customer to select the ideal product for its application and to help install and configure devices ([customercare@gefran.com](mailto:customercare@gefran.com)).

Gefran offers a wide range of courses at different levels for the technical-commercial study of the Gefran product range as well as specific courses on demand.

### Certifications



RoHS✓

PLC²



# SENSORS

## PRESSURE SENSORS

Instruments to measure fluids, liquids or gases: ideal for all industrial applications. Also available in ATEX Intrinsic Safety versions for use in potentially explosive atmospheres.



## MELT PRESSURE SENSORS

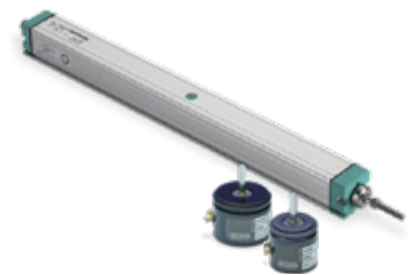
Melt pressure sensors and high-temperature pressure transducers and transmitters are available with mercury\* filling, with FDA-approved fluid, and in fluid-free versions. Ideal for extrusion and injection applications.



\* Mercury filled versions are available only where permitted by the European Directive 2011/65/EU (RoHS II)

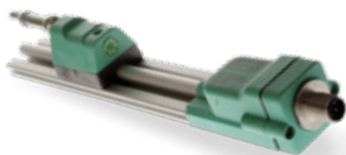
## POSITION TRANSDUCERS: POTENTIOMETERS

Sensors for measuring linear or angular displacement, suitable for all industrial applications. These are "Simple devices" according to EN 60079-11:2007 (Explosive atmospheres. Equipment protected by intrinsic safety "i"). Robust and versatile even in heavy-duty applications.



## POSITION TRANSDUCERS: MAGNETOSTRICTIVE

Gefran magnetostrictive position sensors are an advance over potentiometric position transducers and offer solutions for more complex applications. Now available with HYPERWAVE technology for simple installation, versatility, and excellent quality/price ratio.



## TEMPERATURE SENSORS: THERMOCOUPLES AND RESISTANCE THERMOMETERS

Gefran offers a wide range of contact temperature sensors, plus custom versions based on type of application, environmental conditions, work, temperature range, and precision required.



## LOAD CELLS, FORCE TRANSDUCERS AND STRAIN SENSORS

Sensors to measure the tension of plastic films and tapes, plus a range of products that measure force, load and compression/traction.



# INSTRUMENTATION AND POWER CONTROLLERS

## CONTROLLERS AND PROGRAMMERS

A wide range of panel-mounted instruments for precise measurement of temperature, pressure, force, position, humidity, etc. Available in Basic, Value, Performance and Multifunction versions, with control and recording functions.



## INDICATORS AND ALARM UNITS

Panel-mounted microprocessor instruments, configurable to display temperature, pressure, capacity, force, position, voltage, current, humidity, etc. With programmable alarms and diagnostics.



## STATIC CONTACTORS AND SOLID STATE RELAYS

Solid-state relays and power units with built-in heatsink, load diagnostics to control resistive loads. Complete range from 15 A to 120 A



## POWER CONTROLLERS

Actuators and solid-state relays to control resistive/inductive/infrared loads in modern temperature control systems. Complete range up to 250 A and exclusive, patented solutions (such as the Xtra series) to protect against short circuits.



# MOTION CONTROL

## INVERTERS FOR INDUSTRIAL APPLICATION

A wide range of field-oriented inverters for the control of asynchronous and synchronous motors either in closed and open loop, applied in the most advanced architectures of automation systems, with standard or customized applicative solutions and installation both air cooled or liquid cooled.



## REGEN AND AC/DC POWER SUPPLIES

Gefran's continuous research provides a wide range of regenerative power supplies, such as Active Front End (AFE200) and Fundamental Front End (FFE200), that implement the most advanced energy-recovery technologies. The SMB200 power supply is ideal for high power applications. The DC bus power supply is used when recovery of any kinetic energy is moderate.



## SERVODRIVES & BRUSHLESS MOTORS

Dedicated to the most advanced motion control systems, the Gefran servo drives are providing a very wide currents range and mechanical solutions for both modular or stand alone technologies in a single drive.



## DC ARMATURE CONVERTERS

The series of digital armature converters with 2 and 4 quadrants configurations, provides the highest technology for the use of DC motors applied in modern automation solutions.



## INVERTERS FOR ELEVATORS

A range of inverters designed for the civil lifting market. Technology and performance aimed at modern elevator systems and projects for lift refurbishments.



# AUTOMATION PLATFORMS

**Gefran Soluzioni** (Company subject to management and coordination by Gefran S.p.A.) supplies industrial products, solutions, and services, with special emphasis on the plastic transformation sector.

**Gefran Soluzioni designs and manufactures automation devices**, electrical panels and control software for industrial processes.

## GCube Fit CUSTOM CONTROLLER

A compact, custom solution to control and display small/medium-size systems and machines. Process control, data logging, and PLC all in one unit.



## GCube Modula INTEGRATED CONTROLLER

An integrated solution especially suitable for medium-size systems and machines, where scalability, management of multiprotocol communication and remote access service are essential.

## GCube Performa EMBEDDED CONTROLLER

An extremely flexible and economical industrial solution for medium-high complexity applications. A complete and integrated solution for machine control, monitoring, communication and automation management.



## Integrated development environment

GF\_Project VX and GF\_Project LX development environments for all Gcube platforms. A series of integrated and standard configuration modules (IEC61131-3) for easy and intuitive development of different types of automation.